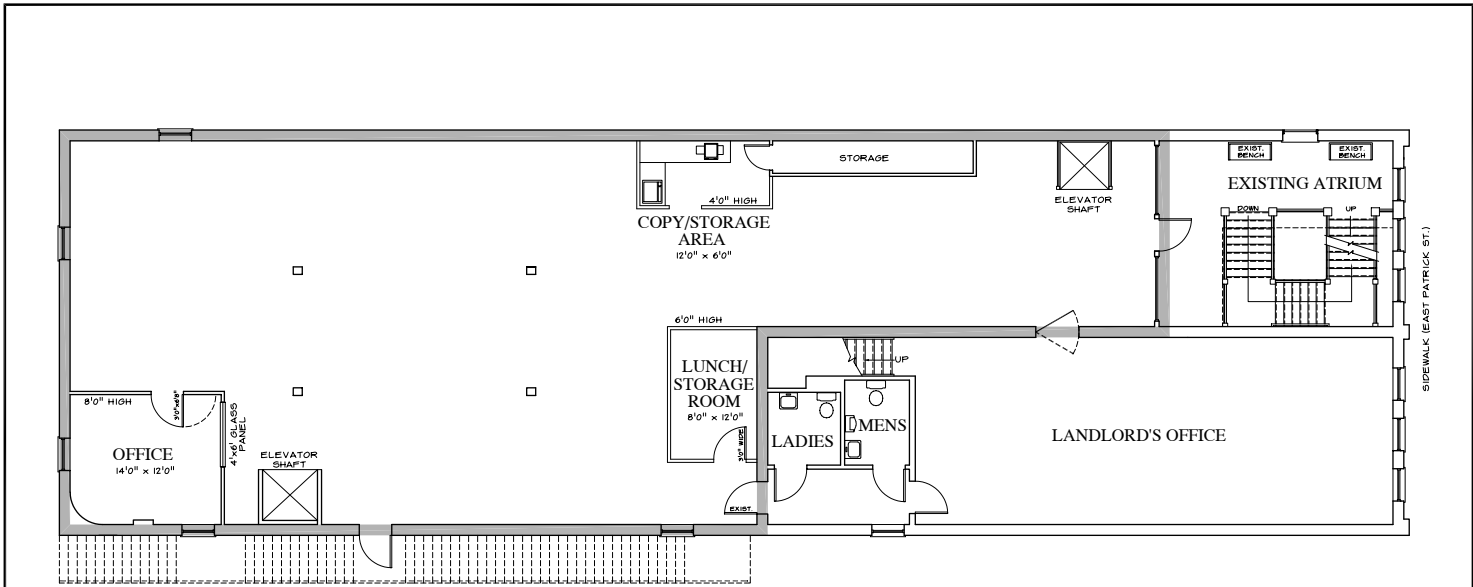


16 East Patrick Street

2nd Floor | Frederick, MD



PARK ALLEY HISTORIC RENOVATION PROJECT
 16/18 EAST PATRICK STREET
 HISTORIC FREDERICK, MARYLAND

SECOND FLOOR PLAN
 ALLAN LUND COMPANY

SCALE: 1" = 10'-0"

FILE: 00044200
 DRAWN BY: JLS
 CHECKED BY: JLS
 DATE: 2/04/99 USM

	PROPERTY OWNERS: STEVE & ARLEEN CHAFITZ	PARK ALLEY HISTORIC RENOVATION PROJECT 16/18 EAST PATRICK STREET HISTORIC FREDERICK, MARYLAND	SECOND FLOOR PLAN ALLAN LUND COMPANY	A-2
---	--	--	--	-----

CHRIS KLINE, JR.
 ckline@fredcommercial.com

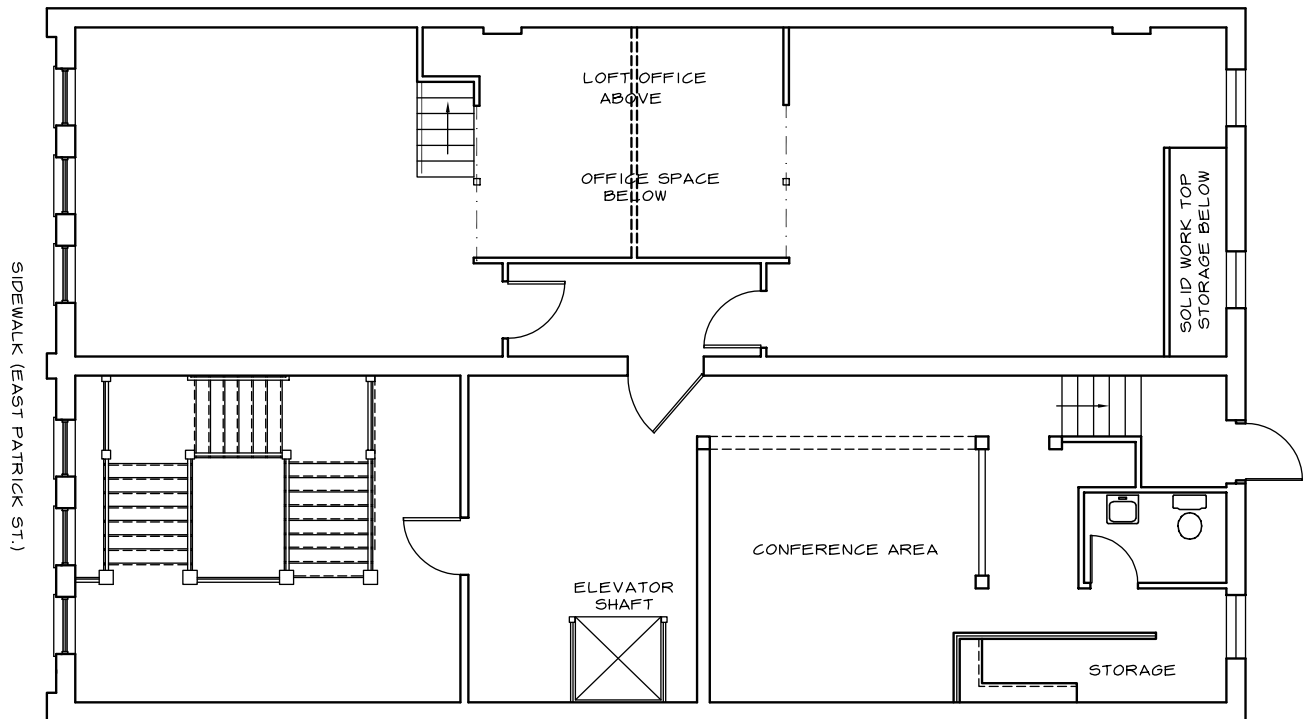
MARIBETH VISCO
 mbfredcom@gmail.com

www.Frederick-Commercial.com | (240)457-4802 OFFICE

*NOTE: THE STATEMENTS AND FIGURES CONTAINED HEREIN, WHILE NOT GUARANTEED, ARE SECURED FROM SOURCES WE BELIEVE AUTHORITATIVE.

16 East Patrick Street

3rd Floor | Frederick, MD



THIRD FLOOR PLAN - PROSPECTIVE OFFICE USE TENANT
NOT TO SCALE

CHRIS KLINE, JR.
ckline@fredcommercial.com

MARIBETH VISCO
mbfredcom@gmail.com

www.Frederick-Commercial.com | (240)457-4802 OFFICE